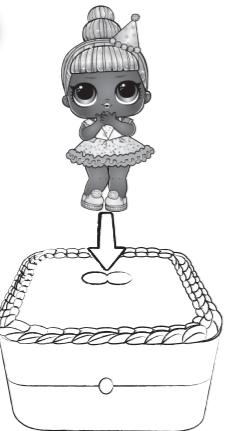


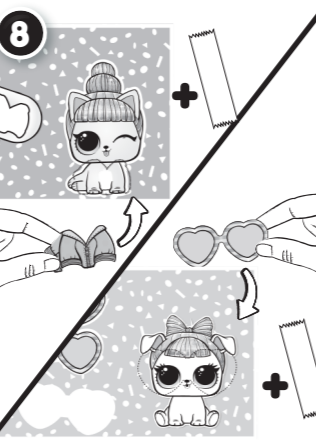
6B



7



8

**COLOR-CHANGE**

- Color change will start at approximately 59°F (15°C), but best results occur if the ice water is chilled to approximately 32°F (0°C) or colder.
- Color change pet will not retain water from the bottle.
- Color change will only work on certain parts of the doll's or pet's body. Not all included accessories change color.
- If color change does not work properly or quickly, the temperature of the doll's or pet's body may be too close to the temperature of the water.
- Color change temperatures may vary according to weather conditions.
- The color-change effect of the doll's and pet's body has a lengthy, but limited lifespan.

PRESENT FIZZ

- Remove plastic wrap from fizz. Then, drop fizz into a large bowl of warm water (98°F/37°C) and watch it dissolve to reveal a cake!
- Dissolve the present fizz in 12 cups (at least 3 liters/ 101.4 fl oz) of water.
- **DO NOT USE THE CASE TO DISSOLVE THE FIZZ. USE A SEPARATE BOWL.**
- It is not recommended to use the doll and pet in dissolved fizz water due to possible color transfer.
- Avoid touching the water until fizz has fully dissolved, as it may temporarily color your hands.

⚠ WARNING

- ADULT SUPERVISION REQUIRED when children are playing with present fizz and near water.
- DO NOT allow children to play with water near any electrical source or apparatus.
- DO NOT eat fizz.
- Contains citric acid. Use as directed.
- **Avoid direct dermal contact with the fizz.**
- Keep out of reach of small children.
- Avoid contact with the eyes. In case of contact, rinse with plenty of water.

IMPORTANT INFORMATION

- Before beginning, cover the play area to protect from possible water and color damage.
- **COLOR MAY STAIN.**
- **WASH HANDS THOROUGHLY AFTER USE WITH MILD SOAP AND WATER.**
- Not intended for bathtub use.
- Deluxe Present Surprise™ will come with one doll and one pet.
- Do not place the doll or pet in extremely hot water.
- Do not store the doll or pet in direct sunlight for extended periods of time.
- Exposure to sunlight may deactivate color change feature.
- Squeeze out all water from the bottle after each use.
- Dry all components on a towel in a well-ventilated area before storing.
- Do not inhale or ingest sand. If ingested, seek medical advice if necessary.
- Keep sand away from eyes, nose and mouth.

IMPORTANT INFORMATION CONTINUED

- Hands should be dry before dissolving fizz.
- Do not play with sand or dissolved fizz with broken skin. If irritation occurs, discontinue use.
- Do not apply stickers to other surfaces, as it may not be completely removed.
- Gently tear the outfit or sunglasses from the paper piece and place it on the outline of the pet. Then, use tape (not included) to secure the outfit/sunglasses.
- Only one paper piece is included.

www.LOLsurprise.com
 ©2020 MGA Entertainment, Inc.
 L.O.L. SURPRISE!™ and DELUXE PRESENT SURPRISE™ are trademarks of MGA in the U.S. and other countries. All logos, names, characters, likenesses, images, slogans, and packaging appearance are the property of MGA.
 MGA Entertainment, Inc.
 9220 Winnetka Ave.
 Chatsworth, CA 91311 U.S.A.
 (800) 222-4685



Imported by MGA Entertainment Australia Pty Ltd
 Suite 2.02, 32 Delhi Road, Macquarie Park NSW 2113
 Tel: 1300 059 676

The preferred method of contact for Customer Service is through our e-mail contact form at www.mgae.com

Printed in China
 0120-0 -E/INT

Please keep this manual as it contains important information. Illustrations are for reference only. Styles may vary from actual contents.



AGES 3+
 ADULT SUPERVISION REQUIRED
 SKUs: 570691/570707
 EACH SET SOLD SEPARATELY

⚠ WARNING:
 CHOKING HAZARD—Small parts.
 Not for children under 3 years.

