

vtech[®]

User's Manual

Drill & Learn Toolbox[™]



© 2016 VTech
All rights reserved
Printed in China
91-003209-005 

Dear Parent,

At **VTech**[®], we know how important the first day of school is for your child. To help prepare preschoolers for this important event, **VTech**[®] has developed the **Preschool Learning**[™] series of interactive toys.

Preschool Learning[™] features fun characters and inviting school themes that use technology to capture a child's attention and teach important preschool skills like spelling, counting and the alphabet. These vital skills are taught in a way that's both fun and highly engaging to maintain a child's interest. Children will also be introduced to fun school subjects such as art class, music class and even recess! With **Preschool Learning**[™], learning is fun from day one!

At **VTech**[®], we know that a child has the ability to do great things. That's why all of our electronic learning products are uniquely designed to develop a child's mind and allow them to learn to the best of their ability. We thank you for trusting **VTech**[®] with the important job of helping your child learn and grow!

Sincerely,

Your friends at **VTech**[®]

To learn more about **VTech**[®] toys, visit vtechkids.com

INTRODUCTION

Thank you for purchasing the **VTech® Drill & Learn Toolbox™!**

Pretend to build or repair things with the drill, hammer and wrench while learning cool tool facts, numbers, colors, objects and more. Use the project cards, follow the instructions and pretend to repair different objects. The handle makes it easy to take the fun on the go!



- | | |
|---------------------------|--------------------|
| ① TOOLBOX | ⑧ TOOL BUTTONS |
| ② SCREWS | ⑨ MODE SELECTOR |
| ③ CARD SLOT | ⑩ HAMMER |
| ④ TRAY HOLES | ⑪ DIRECTION SWITCH |
| ⑤ OFF/VOLUME SWITCH | ⑫ DRILL |
| ⑥ NAILS | ⑬ WRENCH |
| ⑦ ELECTRONIC PROJECT TRAY | ⑭ PROJECT CARDS |

INCLUDED IN THIS PACKAGE

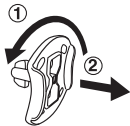
- One VTech® Drill & Learn Toolbox™
- Tool accessories: drill, hammer, wrench, 2 screws, 2 nails, 2 double-sided project cards
- One electronic project tray
- User's manual

WARNING: All packing materials, such as tape, plastic sheets, packaging locks and tags are not part of this toy, and should be discarded for your child's safety.

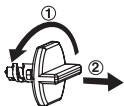
ATTENTION: Pour la sécurité de votre enfant, débarrassez-vous de tous les produits d'emballage tels que rubans adhésifs, feuilles de plastique, attaches et étiquettes. Ils ne font pas partie du jouet.

NOTE: Please keep this user's manual as it contains important information.

Unlock the packaging locks:



1. Rotate the packaging lock 90 degrees counterclockwise.
2. Pull out the packaging lock and discard.



1. Turn the packaging lock counterclockwise several times.
2. Pull out and discard the packaging lock.

WARNING:

Do not insert anything other than the included **SCREWS** or **NAILS** into the **TRAY HOLES** of the **ELECTRONIC PROJECT TRAY**. Doing so may damage the **ELECTRONIC PROJECT TRAY**.

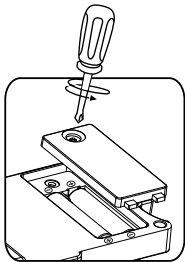


GETTING STARTED

BATTERY INSTALLATION

NOTE: For best performance, remove all factory-installed batteries from the **VTech® Drill & Learn Toolbox™** and use new alkaline batteries.

1. Make sure the unit is **OFF**.
2. Locate the battery cover on the bottom of the **ELECTRONIC PROJECT TRAY** and open it with a screwdriver.
3. Install 2 new “AA” size batteries following the diagram inside the battery box. (New alkaline batteries are recommended for maximum performance.)
4. Replace the battery cover and tighten the screw to secure.



BATTERY NOTICE

- Use new alkaline batteries for maximum performance.
- Use only batteries of the same or equivalent type as recommended.
- Do not mix different types of batteries: alkaline, standard (carbon-zinc) or rechargeable (Ni-Cd, Ni-MH), or new and used batteries.
- Do not use damaged batteries.
- Insert batteries with the correct polarity.
- Do not short-circuit the battery terminals.
- Remove exhausted batteries from the toy.
- Remove batteries during long periods of non-use.
- Do not dispose of batteries in fire.
- Do not charge non-rechargeable batteries.
- Remove rechargeable batteries from the toy before charging (if removable).
- Rechargeable batteries are only to be charged under adult supervision.

ACTIVATING NORMAL PLAY MODE

When the product is taken out of the packaging, turn it on and insert a **PROJECT CARD**. You will hear a beep and a voice confirming you are in normal play mode.

PRODUCT FEATURES

1. OFF/VOLUME SWITCH

To turn the unit **ON** or adjust the volume, slide the switch to **LOW** or **HIGH**. To turn the unit **OFF**, slide the switch to **OFF**.



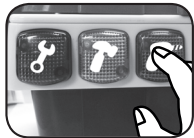
2. MODE SELECTOR

Slide the **MODE SELECTOR** to choose an activity. Choose from three activities.



3. TOOL BUTTONS

Press the **TOOL BUTTONS** to learn about the tools, their functions, hear fun sounds or answer questions.



4. TRAY HOLES

Drill the **SCREWS** or hammer the **NAILS** into the **TRAY HOLES** to play or answer questions.



5. DOUBLE-SIDED PROJECT CARDS

Insert either card into the **CARD SLOT** to play an activity.



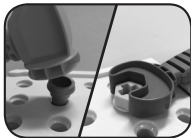
6. DRILL

Use the **DRILL** to drill screws into the **TRAY HOLES**. The **DRILL** can turn clockwise or counterclockwise by sliding the **DIRECTION SWITCH** on the side.



7. ACCESSORIES

Use the **HAMMER** or **WRENCH** to insert the **NAILS** or **SCREWS** into the **TRAY HOLES**.



8. AUTOMATIC SHUT-OFF

To prolong battery life, the **VTech® Drill & Learn Toolbox™** will shut off automatically after several minutes without input. The unit can be turned on again by sliding the **OFF/VOLUME SWITCH** or sliding the **MODE SELECTOR**.

The unit will also automatically turn off when the batteries are very low.

ACTIVITIES

1. FREE PLAY MODE

Press the three **TOOL BUTTONS** to learn about tools, sounds and colors. Use the **DRILL**, **HAMMER** or **WRENCH** to drill **SCREWS** or hammer **NAILS** into the **TRAY HOLES**. If no **PROJECT CARD** is inserted, you will hear sounds and phrases. If a **PROJECT CARD** is inserted into the **CARD SLOT**, drill the **SCREWS** or hammer the **NAILS** into the **TRAY HOLES** to learn about numbers, more than or less than, colors, spelling, vehicles, objects and more.

After every five actions (drill a screw, hammer a nail, etc.), a reward song plays.

2. QUIZ MODE

It's time to show off your fix-it skills! Listen to the questions and answer them by using the tools or pressing the **TOOL BUTTONS**.

3. MUSIC MODE

Press the **TOOL BUTTONS** or insert a **PROJECT CARD** to hear songs about tools, numbers, colors and objects.

SUNG SONG LYRICS

Colors Card:

Let's shout out colors, to the beat.
Red, yellow, white, pink and green,
I'm a super-duper fix-it machine.
Construction orange, purple, brown and blue,
Amazing color rhymes from me to you!

Numbers Card:

One, two, grab a screw.
Three, four, drill some more.
Five, six, it's all fixed!
Seven, eight, nine, feeling fine!

Vehicles Card:

Things that go fast and slow,
Need lots of care.
A patch here, a mend there,
All the fixing, we can share!

Housewares Card:

Oh I love to fix everything!
I'm never without my toolbox.
No project is too big or too small,
Oh I love to fix everything.

Wrench Song:

Righty tighty, lefty loosey,
I love my trusty wrench.
Righty tighty, lefty loosey,
It lives inside my tool bench!

Hammer Song:

I need a nail and a hammer.
I need a hammer and a nail.
I have my tools and I'm on the fix-it trail!

Drill Song:

We have a drill and a screw,
Whaddya want to do?
Let's build something for
Me and you!

CARE & MAINTENANCE

1. Keep the unit clean by wiping it with a slightly damp cloth.
2. Keep the unit out of direct sunlight and away from any direct heat source.
3. Remove the batteries when the unit is not in use for an extended period of time.
4. Do not drop the unit on hard surfaces and do not expose the unit to moisture or water.

TROUBLESHOOTING

If for some reason the program/activity stops working or the unit can't be turned on again, please follow the following steps:

1. Turn the unit **OFF**.
2. Interrupt the power supply by removing the batteries.
3. Let the unit stand for a few minutes, then replace the batteries.
4. Turn the unit **ON**. The unit should now be ready to play again.
5. If the unit still does not work, replace with a set of new batteries.

If the problem persists, please call our Consumer Services Department at 1-800-521-2010 in the U.S. or 1-877-352-8697 in Canada, or by going to our web site at www.vtechkids.com and filling out our Contact Us form located under the Customer Support link. A service representative will be happy to help you.

IMPORTANT NOTE:

Creating and developing **VTech**[®] products is accompanied by a responsibility that we at **VTech**[®] take very seriously. We make every effort to ensure the accuracy of the information which forms the value of our products. However, errors sometimes can occur. It is important for you to know that we stand behind our products and encourage you to call our Consumer Services Department at 1-800-521-2010 in the U.S., or 1-877-352-8697 in Canada or by going to our web site at www.vtechkids.com and filling out our Contact Us form located under the Customer Support link. A service representative will be happy to help you.

NOTE:

This equipment has been tested and found to comply with the limits for a Class B digital device, pursuant to Part 15 of the FCC Rules. These limits are designed to provide reasonable protection against harmful interference in a residential installation. This equipment generates, uses and can radiate radio frequency energy and, if not installed and used in accordance with the instructions, may cause harmful interference to radio communications. However, there is no guarantee that interference will not occur in a particular installation. If this equipment does cause harmful interference to radio or television reception, which can be determined by turning the equipment off and on, the user is encouraged to try to correct the interference by one or more of the following measures:

- Reorient or relocate the receiving antenna.
- Increase the separation between the equipment and receiver.
- Connect the equipment into an outlet on a circuit different from that to which the receiver is connected.
- Consult the dealer or an experienced radio/TV technician for help.

Caution: Changes or modifications not expressly approved by the party responsible for compliance could void the user's authority to operate the equipment.





PRODUCT WARRANTY

This Warranty is applicable only to the original purchaser, is non-transferable and applies only to "VTech" products or parts. This product is covered by a 3-month Warranty from the original purchase date, under normal use and service, against defective workmanship and materials. This Warranty does not apply to (a) consumable parts, such as batteries; (b) cosmetic damage, including but not limited to scratches and dents; (c) damage caused by use with non-VTech products; (d) damage caused by accident, misuse, unreasonable use, immersion in water, neglect, abuse, battery leakage, or improper installation, improper service, or other external causes; (e) damage caused by operating the product outside the permitted or intended uses described by VTech in the owner's manual; (f) a product or part that has been modified (g) defects caused by normal wear and tear or otherwise due to the normal aging of the product; or (h) if any VTech serial number has been removed or defaced.

Prior to returning a product for any reason, please notify the VTech Consumer Services Department by going to our web site at www.vtechkids.com, filling out our Contact Us form located under the Customer Support link or calling 1-800-521-2010.

If the service representative is unable to resolve the issue, you will be provided instructions on how to return the product and have it replaced under Warranty. Return of the product under Warranty must adhere to the following rules: If VTech believes that there may be a defect in the materials or workmanship of the product and can confirm the purchase date and location of the product, we will at our discretion replace the product with a new unit or product of comparable value. A replacement product or parts assumes the remaining Warranty of the original product or 30 days from the date of replacement, whichever provides longer coverage.

THIS WARRANTY AND THE REMEDIES SET FORTH ABOVE ARE EXCLUSIVE AND IN LIEU OF ALL OTHER WARRANTIES, REMEDIES AND CONDITIONS, WHETHER ORAL, WRITTEN, STATUTORY, EXPRESS OR IMPLIED. IF VTECH CANNOT LAWFULLY DISCLAIM STATUTORY OR IMPLIED WARRANTIES THEN TO THE EXTENT PERMITTED BY LAW, ALL SUCH WARRANTIES SHALL BE LIMITED TO THE DURATION OF THE EXPRESS WARRANTY AND TO THE REPLACEMENT SERVICE AS DETERMINED BY VTECH IN ITS SOLE DISCRETION.

To the extent permitted by law, VTech will not be responsible for direct, special, incidental or consequential damages resulting from any breach of Warranty.

This Warranty is not intended to persons or entities outside the United States of America. Any disputes resulting from this Warranty shall be subject to the final and conclusive determination of VTech.