

vtech[®]

Parent's Guide

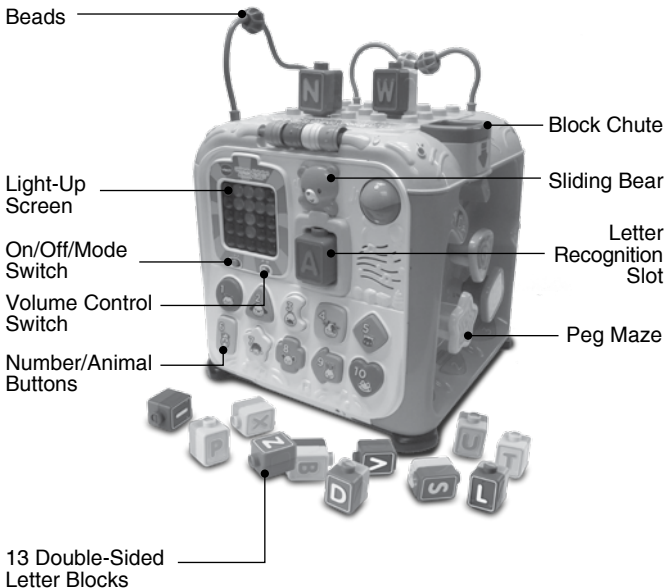
Ultimate Alphabet Activity Cube™



91-003361-000 ^{US}

INTRODUCTION

Thank you for purchasing the **VTech® Ultimate Alphabet Activity Cube™**. This cube has five interactive sides and includes 13 double-sided letter blocks. Insert the letter blocks into the letter recognition slot and the cube will show the letter on the LED screen and introduce it. Drop the blocks down the chute to hear them counted, or stack the letter blocks on the top of the cube. Other sides feature animals to slide or flip, block sorter slots, gears and more.



INCLUDED IN THIS PACKAGE



- One **Ultimate Alphabet Activity Cube™**

- Two bead tracks



- 13 double-sided letter blocks
- One sheet of labels
- One parent's guide

WARNING: All packing materials, such as tape, plastic sheets, packaging locks, removable tags, cable ties and packaging screws are not part of this toy, and should be discarded for your child's safety.

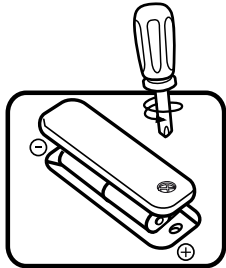
ATTENTION: Pour la sécurité de votre enfant, débarrassez-vous de tous les produits d'emballage tels que rubans adhésifs, feuilles de plastique, attaches, étiquettes et vis d'emballage. Ils ne font pas partie du jouet.

NOTE: Please keep this parent's guide as it contains important information.

GETTING STARTED

BATTERY INSTALLATION

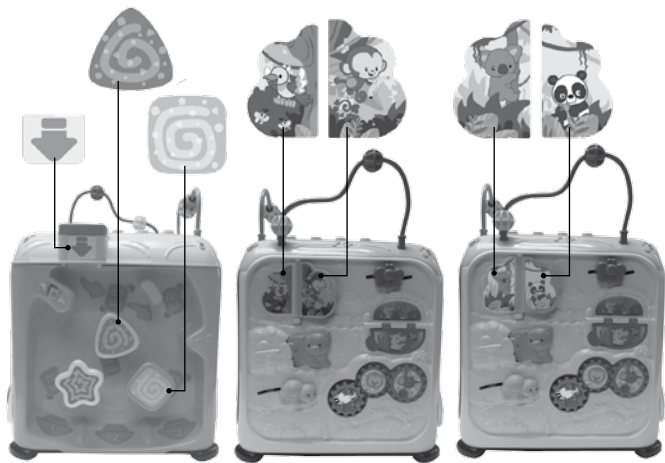
1. Make sure the unit is turned **OFF**.
2. Locate the battery cover on the bottom of the electronic panel. Use a screwdriver to loosen the screw.
3. Install 2 new AA (AM-3/LR6) batteries following the diagram inside the battery box. (The use of new alkaline batteries is recommended for maximum performance.)
4. Replace the battery cover and tighten the screw to secure.



BATTERY NOTICE

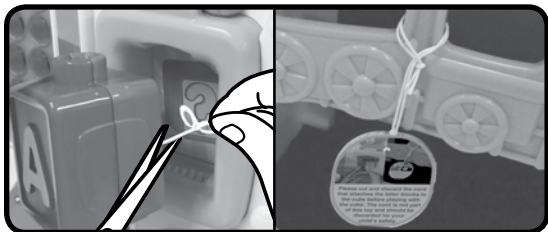
- Use new alkaline batteries for maximum performance.
- Use only batteries of the same or equivalent type as recommended.
- Do not mix different types of batteries: alkaline, standard (carbon-zinc) or rechargeable (Ni-Cd, Ni-MH), or new and used batteries.
- Do not use damaged batteries.
- Insert batteries with the correct polarity.
- Do not short-circuit the battery terminals.
- Remove exhausted batteries from the toy.
- Remove batteries during long periods of non-use.
- Do not dispose of batteries in fire.
- Do not charge non-rechargeable batteries.
- Remove rechargeable batteries from the toy before charging (if removable).
- Rechargeable batteries are only to be charged under adult supervision.

Please adhere the labels to the cube securely as indicated below:



Warning:

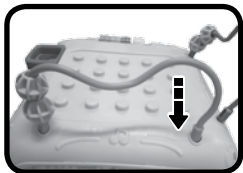
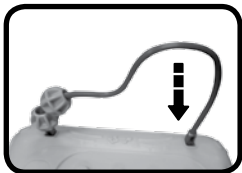
Please cut and discard the cord with the warning card and the cord that attaches the letter blocks to the cube before playing with the cube. The cords and card are not part of this toy and should be discarded for your child's safety.



ASSEMBLY INSTRUCTIONS

With the **Ultimate Alphabet Activity Cube™**, safety comes first. To ensure your child's safety, adult assembly is required.

To attach the bead tracks to the top of the cube, insert the ends of the bead tracks into the slots on the top of the cube. You will hear the bead tracks click into place. Once the bead tracks are inserted they cannot be removed.



PRODUCT FEATURES

1. On/Off/Mode Switch

To turn the unit **ON**, slide the **On/Off/Mode Switch** to Learning Mode (📖) to hear a sing-along song, a phrase and a sound or slide the switch to Explore Mode (🎵) to hear a short tune, a phrase and a sing-along song. To turn the unit **OFF**, slide the **On/Off/Mode Switch** to the **OFF** (●) position.



2. Volume Control Switch

To adjust the volume, slide the **Volume Control Switch** to the **Low Volume** (🔊) or **High Volume** (🔊))) position.



3. Automatic Shut Off

To preserve battery life, the **Ultimate Alphabet Activity Cube™** will automatically power down after approximately one minute without input. The unit can be turned on again by pressing any button, inserting a block into the letter recognition slot, dropping a block into the block chute or sliding the bear character.

NOTE: If the unit powers down while playing, we suggest changing the batteries.

ACTIVITIES

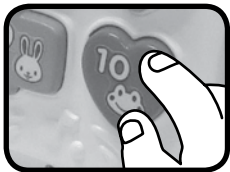
1. Letter Recognition Slot

Insert the **Letter Blocks** into the **Letter Recognition Slot** to learn letters and hear fun sounds and short tunes in Learning Mode. Learn about letters and objects, answer simple questions and hear fun sounds and short tunes in Explore Mode. The light-up screen will show fun animations.



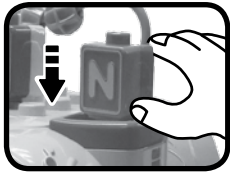
2. Number/Animal Buttons

Press the **Number/Animal Buttons** to learn numbers, shapes, colors and animals in Learning Mode. In Explore Mode you will hear animal sounds and music, and can answer simple questions. The light-up screen will show fun animations.



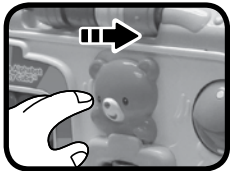
3. Block Chute

Drop the **Letter Blocks** into the **Block Chute** to hear the blocks counted in Learning Mode and hear music in Explore Mode. The light-up screen will show fun animations.



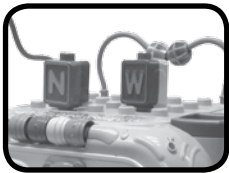
4. Sliding Bear

Move the **Sliding Bear** to hear playful phrases, songs and simple questions in Learning Mode, and hear fun sounds and music in Explore Mode. The light-up screen will show fun animations.



5. Letter Blocks

Stack and build with the **Letter Blocks** on the building surface, or tap the building surface to hear fun sounds in Learning Mode and hear music in Explore Mode. The light-up screen will show fun animations.



SONG LYRICS

SONG 1

Drop a block into my chute,
Or build up a tower on top of me.

MELODY LIST

1. Three Little Kittens
2. BINGO
3. Down by the Riverside
4. Froggy Went a Courtin'
5. All the Pretty Little Horses
6. Hey Diddle Diddle
7. Baa, Baa, Black Sheep
8. Aiken Drum
9. Hickory, Dickory, Dock
10. Skip to My Lou
11. Teddy Bears' Picnic
12. Ring Around the Rosy
13. Here We Go Round the Mulberry Bush
14. Bear Went Over the Mountain
15. Pop! Goes the Weasel

CARE & MAINTENANCE

1. Keep the unit clean by wiping it with a slightly damp cloth.
2. Keep the unit out of direct sunlight and away from any direct heat source.
3. Remove the batteries when the unit will not be in use for an extended period of time.
4. Do not drop the unit on hard surfaces and do not expose the unit to moisture or water.

TROUBLESHOOTING

If for some reason the program/activity stops working or malfunctions, please follow these steps:

1. Please turn the unit **OFF**.
2. Interrupt the power supply by removing the batteries.
3. Let the unit stand for a few minutes, then replace the batteries.
4. Turn the unit **ON**. The unit should now be ready to play again.
5. If the product still does not work, replace with an entire set of new batteries.

If the problem persists, please call our Consumer Services Department at 1-800-521-2010 in the U.S. or 1-877-352-8697 in Canada, or by going to our website at vtechkids.com and filling out our Contact Us form located under the Customer Support link. A service representative will be happy to help you.

IMPORTANT NOTE:

Creating and developing **VTech**[®] products is accompanied by a responsibility that we at **VTech**[®] take very seriously. We make every effort to ensure the accuracy of the information, which forms the value of our products. However, errors sometimes can occur. It is important for you to know that we stand behind our products and encourage you to call our Consumer Services Department at 1-800-521-2010 in the U.S. or 1-877-352-8697 in Canada, or by going to our website at vtechkids.com and filling out our Contact Us form located under the Customer Support link with any problems and/or suggestions that you might have. A service representative will be happy to help you.

Note:

This equipment has been tested and found to comply with the limits for a Class B digital device, pursuant to Part 15 of the FCC Rules. These limits are designed to provide reasonable protection against harmful interference in a residential installation. This equipment generates, uses and can radiate radio frequency energy and, if not installed and used in accordance with the instructions, may cause harmful interference to radio communications. However, there is no guarantee that interference will not occur in a particular installation. If this equipment does cause harmful interference to radio or television reception, which can be determined by turning the equipment off and on, the user is encouraged to try to correct the interference by one or more of the following measures:

- Reorient or relocate the receiving antenna.
- Increase the separation between the equipment and receiver.
- Connect the equipment into an outlet on a circuit different from that to which the receiver is connected.
- Consult the dealer or an experienced radio/TV technician for help.

THIS DEVICE COMPLIES WITH PART 15 OF THE FCC RULES. OPERATION IS SUBJECT TO THE FOLLOWING TWO CONDITIONS: (1) THIS DEVICE MAY NOT CAUSE HARMFUL INTERFERENCE, AND (2) THIS DEVICE MUST ACCEPT ANY INTERFERENCE RECEIVED, INCLUDING INTERFERENCE THAT MAY CAUSE UNDESIRE OPERATION.

CAN ICES-3 (B)/NMB-3(B)

Caution: Changes or modifications not expressly approved by the party responsible for compliance could void the user's authority to operate the equipment.



PRODUCT WARRANTY

This Warranty is applicable only to the original purchaser, is non-transferable and applies only to "VTech" products or parts. This product is covered by a 3-month Warranty from the original purchase date, under normal use and service, against defective workmanship and materials. This Warranty does not apply to (a) consumable parts, such as batteries; (b) cosmetic damage, including but not limited to scratches and dents; (c) damage caused by use with non-VTech products; (d) damage caused by accident, misuse, unreasonable use, immersion in water, neglect, abuse, battery leakage, or improper installation, improper service, or other external causes; (e) damage caused by operating the product outside the permitted or intended uses described by VTech in the owner's manual; (f) a product or part that has been modified (g) defects caused by normal wear and tear or otherwise due to the normal aging of the product; or (h) if any VTech serial number has been removed or defaced.

Prior to returning a product for any reason, please notify the VTech Consumer Services Department by going to our website at vtechkids.com, filling out our Contact Us form located under the Customer Support link or calling 1-800-521-2010.

If the service representative is unable to resolve the issue, you will be provided instructions on how to return the product and have it replaced under Warranty. Return of the product under Warranty must adhere to the following rules: If VTech believes that there may be a defect in the materials or workmanship of the product and can confirm the purchase date and location of the product, we will at our discretion replace the product with a new unit or product of comparable value. A replacement product or parts assumes the remaining Warranty of the original product or 30 days from the date of replacement, whichever provides longer coverage.

THIS WARRANTY AND THE REMEDIES SET FORTH ABOVE ARE EXCLUSIVE AND IN LIEU OF ALL OTHER WARRANTIES, REMEDIES AND CONDITIONS, WHETHER ORAL, WRITTEN, STATUTORY, EXPRESS OR IMPLIED. IF VTECH CANNOT LAWFULLY DISCLAIM STATUTORY OR IMPLIED WARRANTIES THEN TO THE EXTENT PERMITTED BY LAW, ALL SUCH WARRANTIES SHALL BE LIMITED TO THE DURATION OF THE EXPRESS WARRANTY AND TO THE REPLACEMENT SERVICE AS DETERMINED BY VTECH IN ITS SOLE DISCRETION.

To the extent permitted by law, VTech will not be responsible for direct, special, incidental or consequential damages resulting from any breach of Warranty.

This Warranty is not intended to persons or entities outside the United States of America. Any disputes resulting from this Warranty shall be subject to the final and conclusive determination of VTech.

**Visit our website for more
information about our products,
downloads, resources and more.**

vtechkids.com

