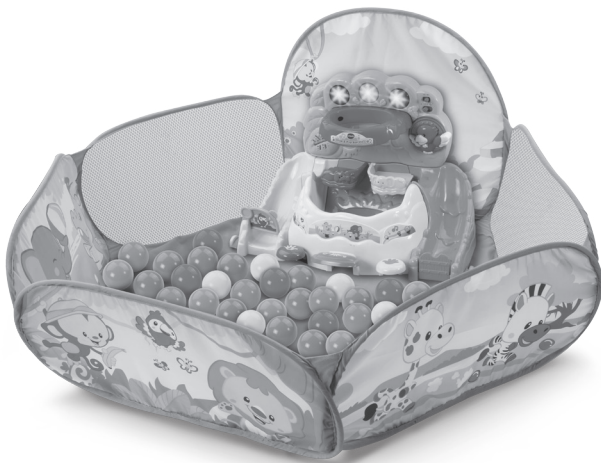


vtech®

Parent's Guide

Pop-a-balls™

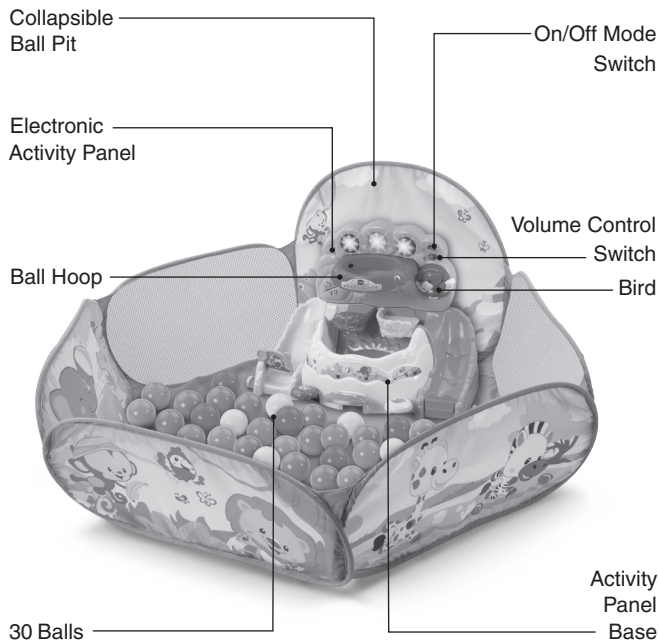
Drop & Pop Ball Pit™



91-003378-000 ©

INTRODUCTION

Thank you for purchasing the **VTech® Pop-a-Balls™ Drop & Pop Ball Pit™**. Your little one will love playing in the ball pit, tossing the balls in the hoop and counting to ten with fun sounds. Press the orange button to hear more fun sounds and responses as the balls pop!



INCLUDED IN THIS PACKAGE

- One activity panel base



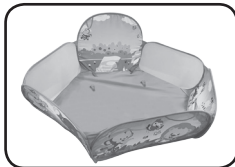
- One electronic activity panel



- One attachment clip



- One collapsible ball pit



- Two small screws
- 30 balls
- One parent's guide

WARNING: All packing materials, such as tape, plastic sheets, packaging locks, removable tags, cable ties and packaging screws are not part of this toy, and should be discarded for your child's safety.

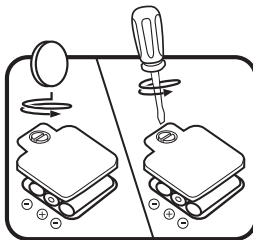
ATTENTION: Pour la sécurité de votre enfant, débarrassez-vous de tous les produits d'emballage tels que rubans adhésifs, feuilles de plastique, attaches, étiquettes et vis d'emballage. Ils ne font pas partie du jouet.

NOTE: Please keep this parent's guide as it contains important information.

GETTING STARTED

BATTERY INSTALLATION

1. Make sure the unit is turned **OFF**.
2. Locate the battery cover on the back of the unit. Use a coin or a screwdriver to loosen the screw.
3. Install 3 new AA (AM-3/LR6) batteries following the diagram inside the battery box. (The use of new alkaline batteries is recommended for maximum performance.)
4. Replace the battery cover and tighten the screw to secure.



BATTERY NOTICE

- Use new alkaline batteries for maximum performance.
- Use only batteries of the same or equivalent type as recommended.
- Do not mix different types of batteries: alkaline, standard (carbon-zinc) or rechargeable, or new and used batteries.
- Do not use damaged batteries.
- Insert batteries with the correct polarity.
- Do not short-circuit the battery terminals.
- Remove exhausted batteries from the toy.
- Remove batteries during long periods of non-use.
- Do not dispose of batteries in fire.
- Do not charge non-rechargeable batteries.
- Remove rechargeable batteries from the toy before charging (if removable).
- Rechargeable batteries are only to be charged under adult supervision.

ASSEMBLY INSTRUCTIONS

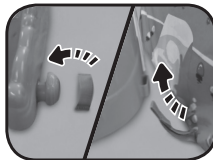
With the **Drop & Pop Ball Pit™**, safety comes first. To ensure your child's safety, adult assembly is required.

WARNING! This unit contains small screws. For your child's safety, do not let your child play with the toy until it is fully assembled. Adult supervision is recommended.

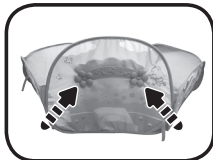
1. Insert the **Electronic Activity Panel** to the **Activity Panel Base**. Using a screwdriver, insert the two small screws into the screw holes on the back of the **Activity Panel Base**.



2. Place the **Activity Panel Base** in the ball pit. Insert the two blue **Attachment Straps** into the slots on the bottom of the **Activity Panel Base**, then pull on the straps until the loops pull through the slots. Hook the two blue straps on either side of the **Activity Panel Base**.



3. Slide the **Activity Panel** against the fabric wall. Locate the two slots on the back of the activity panel and fasten it to the fabric wall using the **Attachment Clip**. You will hear the **Attachment Clip** snap into place when inserted correctly.



PRODUCT FEATURES

1. On/Off/Mode Switch

To turn the unit **ON**, slide the **On/Off/Mode Switch** to the Counting Mode (123) or Animal Mode (🐾) position. You will hear a song and a welcoming phrase. To turn the unit **OFF**, slide the **On/Off/Mode Switch** to the **OFF** (●) position.



2. Volume Control Switch

Slide the **Volume Control Switch** to the **High Volume** (🔊) or **Low Volume** (🔊) position.



3. Automatic Shut Off

To preserve battery life, the **Drop & Pop Ball Pit™** will automatically power down after approximately 50 seconds without input. The unit can be turned on again by pressing any button.

NOTE: If the unit powers down while playing, we suggest changing the batteries.

The infrared light sensors in the ball hoop are sensitive to sunlight. The sensors may not perform properly in brightly lit, sunny rooms or under direct sunlight.

4. Storage

To fold up the collapsible ball pit for storage, remove the **Activity Panel Base** and put the **Balls** in the middle of the ball pit. Fold the panel opposite the tallest panel over the **Balls** then fold in the two sides. Tie the two ties together.



ACTIVITIES

1. Hoop

Toss the **Balls** into the **Ball Hoop** to hear the **Balls** counted in Counting Mode or hear fun sounds in Animal Mode. The lights will flash with the sounds.



2. Purple Button

Press the purple button to move the hippo up and down. You will hear fun sounds in Counting Mode. In Animal Mode you will be introduced to the hippo through fun phrases and a song. The lights will flash with the sounds.



3. Orange Button

Press the orange button to pop the balls out of the reservoir. You will hear a song, short tunes and fun sounds in Counting Mode. In Animal Mode you will hear playful phrases and fun sounds. The lights will flash with the sounds.



4. Yellow Button

Press the yellow button to move the elephant up and down. You will hear fun sounds in Counting Mode. In Animal Mode you will be introduced to the elephant through fun phrases and a song. The lights will flash with the sounds.



5. Bird

Twist the **Bird** to hear him ask simple questions in Counting Mode. In Animal Mode you will hear fun phrases about the bird, bird sounds, a song and melodies. The lights will flash with the sounds.





SONG LYRICS

SONG 1

Come with me, let's have some fun,
Let's play and count, from one to ten!
Come with me, let's have some fun,
Throw the ball! Yay! Nice shot!

SONG 2

Popping and popping,
All the balls are popping.
The popping balls never stop,
Are you gonna catch them all?

SONG 3

In the jungle, the trees grow high,
The flowers are so pretty.
On the ground, the balls fall down,
And chirp goes the birdie!

SONG 4

Hippo in the river,
Hippo on the land,
Hippo on the playground,
Hippo on the sand.

SONG 5

Let's stomp and play all day!
Cheer with the elephant,
Hooray!






MELODY LIST

1. Do You Know the Muffin Man?
 2. A-Tisket, A-Tasket
 3. Pop! Goes the Weasel
 4. Aiken Drum
 5. This Old Man
 6. Mary, Mary, Quite Contrary
 7. Famer in the Dell
 8. One Man Went to Mow a Meadow
 9. Frère Jacques
 10. Hot Cross Buns
 11. Pat-a-Cake
 12. Ring Around the Rosy
 13. Old King Cole
 14. Skip to My Lou
 15. Baa, Baa, Black Sheep
- 

CARE & MAINTENANCE

1. Keep the unit clean by wiping it with a slightly damp cloth.
 2. Keep the unit out of direct sunlight and away from any direct heat source.
 3. Remove the batteries when the unit will not be in use for an extended period of time.
 4. Do not drop the unit on hard surfaces and do not expose the unit to moisture or water.
- 



TROUBLESHOOTING

If for some reason the program/activity stops working or malfunctions, please follow these steps:


1. Please turn the unit **OFF**.
2. Interrupt the power supply by removing the batteries.
3. Let the unit stand for a few minutes, then replace the batteries.
4. Turn the unit **ON**. The unit should now be ready to play again.
5. If the product still does not work, replace with an entire set of new batteries.

If the problem persists, please call our Consumer Services Department at 1-800-521-2010 in the U.S. or 1-877-352-8697 in Canada, or by going to our website at vtechkids.com and filling out our Contact Us form located under the Customer Support link. A service representative will be happy to help you.



IMPORTANT NOTE:



Creating and developing **VTech**[®] products is accompanied by a responsibility that we at **VTech**[®] take very seriously. We make every effort to ensure the accuracy of the information, which forms the value of our products. However, errors sometimes can occur. It is important for you to know that we stand behind our products and encourage you to call our Consumer Services Department at 1-800-521-2010 in the U.S. or 1-877-352-8697 in Canada, or by going to our website at vtechkids.com and filling out our Contact Us form located under the Customer Support link with any problems and/or suggestions that you might have. A service representative will be happy to help you.





Note:

This equipment has been tested and found to comply with the limits for a Class B digital device, pursuant to Part 15 of the FCC Rules. These limits are designed to provide reasonable protection against harmful interference in a residential installation. This equipment generates, uses and can radiate radio frequency energy and, if not installed and used in accordance with the instructions, may cause harmful interference to radio communications. However, there is no guarantee that interference will not occur in a particular installation. If this equipment does cause harmful interference to radio or television reception, which can be determined by turning the equipment off and on, the user is encouraged to try to correct the interference by one or more of the following measures:

- 
- Reorient or relocate the receiving antenna.
 - Increase the separation between the equipment and receiver.
 - Connect the equipment into an outlet on a circuit different from that to which the receiver is connected.
 - Consult the dealer or an experienced radio/TV technician for help.
- 

THIS DEVICE COMPLIES WITH PART 15 OF THE FCC RULES. OPERATION IS SUBJECT TO THE FOLLOWING TWO CONDITIONS: (1) THIS DEVICE MAY NOT CAUSE HARMFUL INTERFERENCE, AND (2) THIS DEVICE MUST ACCEPT ANY INTERFERENCE RECEIVED, INCLUDING INTERFERENCE THAT MAY CAUSE UNDESIRABLE OPERATION.

CAN ICES-3 (B)/NMB-3(B)

Caution: Changes or modifications not expressly approved by the party responsible for compliance could void the user's authority to operate the equipment.



CAUTION:

Adult assembly required.

This package contains small screws. For your child's safety, do not let your child play with the toy until it is fully assembled.



ATTENTION !

Ce jouet doit être assemblé par un adulte.
Cet emballage contient petites vis. Pour la sécurité de votre enfant, ne pas lui confier le jouet tant qu'il n'est pas assemblé.





PRODUCT WARRANTY

This Warranty is applicable only to the original purchaser, is non-transferable and applies only to "VTECH" products or parts. This product is covered by a 3-month Warranty from the original purchase date, under normal use and service, against defective workmanship and materials. This Warranty does not apply to (a) consumable parts, such as batteries; (b) cosmetic damage, including but not limited to scratches and dents; (c) damage caused by use with non-VTECH products; (d) damage caused by accident, misuse, unreasonable use, immersion in water, neglect, abuse, battery leakage, or improper installation, improper service, or other external causes; (e) damage caused by operating the product outside the permitted or intended uses described by VTECH in the owner's manual; (f) a product or part that has been modified (g) defects caused by normal wear and tear or otherwise due to the normal aging of the product; or (h) if any VTECH serial number has been removed or defaced.

Prior to returning a product for any reason, please notify the VTECH Consumer Services Department by going to our website at vtechkids.com, filling out our Contact Us form located under the Customer Support link or calling 1-800-521-2010.

If the service representative is unable to resolve the issue, you will be provided instructions on how to return the product and have it replaced under Warranty. Return of the product under Warranty must adhere to the following rules: If VTECH believes that there may be a defect in the materials or workmanship of the product and can confirm the purchase date and location of the product, we will at our discretion replace the product with a new unit or product of comparable value. A replacement product or parts assumes the remaining Warranty of the original product or 30 days from the date of replacement, whichever provides longer coverage.

THIS WARRANTY AND THE REMEDIES SET FORTH ABOVE ARE EXCLUSIVE AND IN LIEU OF ALL OTHER WARRANTIES, REMEDIES AND CONDITIONS, WHETHER ORAL, WRITTEN, STATUTORY, EXPRESS OR IMPLIED. IF VTECH CANNOT LAWFULLY DISCLAIM STATUTORY OR IMPLIED WARRANTIES THEN TO THE EXTENT PERMITTED BY LAW, ALL SUCH WARRANTIES SHALL BE LIMITED TO THE DURATION OF THE EXPRESS WARRANTY AND TO THE REPLACEMENT SERVICE AS DETERMINED BY VTECH IN ITS SOLE DISCRETION.

To the extent permitted by law, VTECH will not be responsible for direct, special, incidental or consequential damages resulting from any breach of Warranty.

This Warranty is not intended to persons or entities outside the United States of America. Any disputes resulting from this Warranty shall be subject to the final and conclusive determination of VTECH.



**Visit our website for more
information about our products,
downloads, resources and more.**



vtechkids.com



TM & © 2017 VTech Holdings Limited.
All rights reserved.
Printed in China.
91-003378-000 ©

